



The Acepsis[®] SMART TROUGH

The Future of
Livestock Water Management



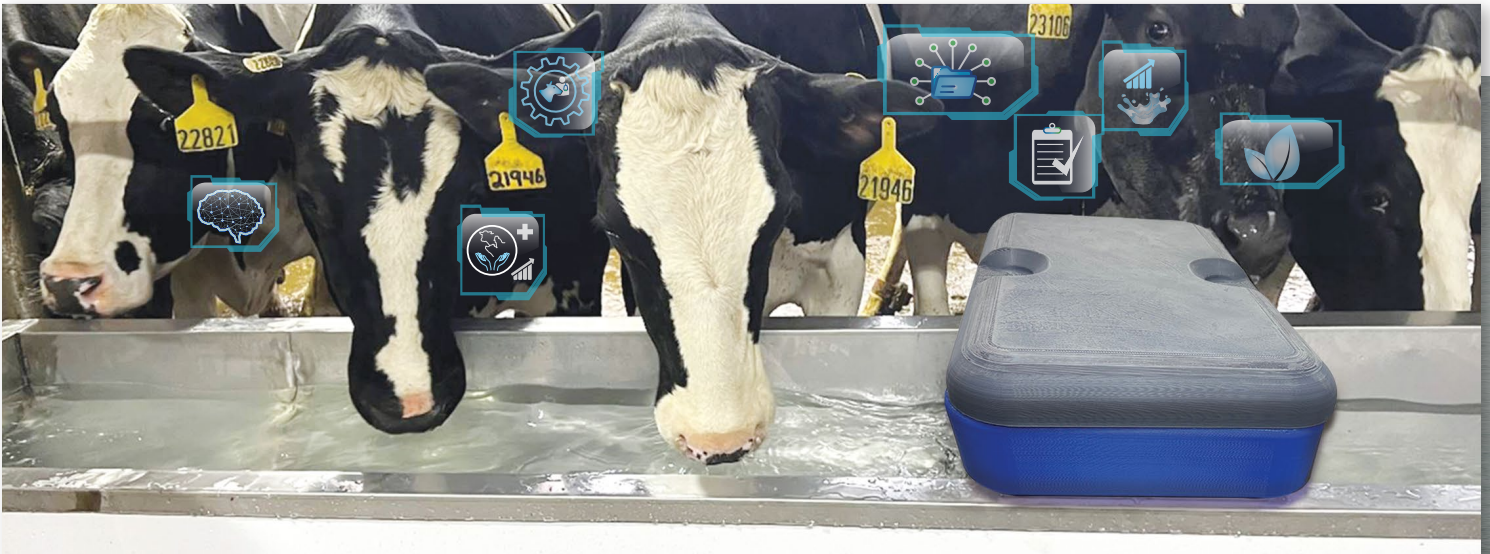


SMART TROUGH™

Unlock the full potential of your dairy herd.

Unlock the full potential of your dairy herd with the essence of a healthy, vibrant herd: **clean, healthy water!**

The secret to a thriving dairy isn't just in the feed, genetics, or management – it's in every drop of water that the cows drink.



The Importance of Water



Water is classified as the most essential nutrient that a dairy cow consumes.

Traditionally, dairy farms test water quality at the source, often overlooking the crucial point of consumption: the water trough. This neglect can compromise livestock health. It's vital to ensure water quality at the troughs, since this directly affects animal well-being, and necessitates regular monitoring and maintenance for optimal health.

The SMART TROUGH™ Flush System: How Does It Work?

The patented Acepsis® SMART TROUGH™ System: a new-to-the-world water trough design. The SMART TROUGH collects all the organics that enter the trough into a central channel.

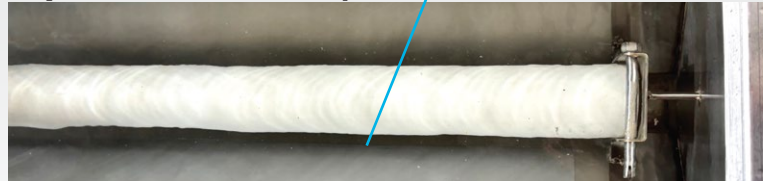
To clean out the organics collected, a baffle tube is placed over the central channel. When the SMART TROUGH drain is opened, it **instantly removes 90+% of the organics collected, dumping less than 20% of the water from the SMART TROUGH™!**

Acepsis® SMART TROUGH™: Step By Step

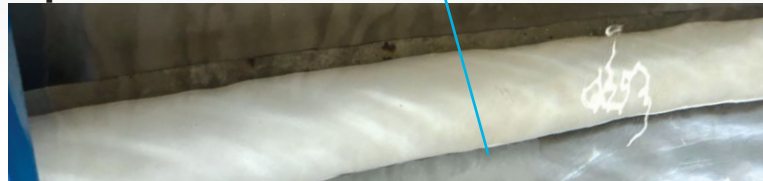


SMART TROUGH™ Flush System with Baffle Tube.

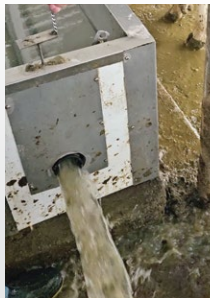
Step 1: Baffle tube open.



Step 2: Baffle tube closed.



Step 3: Drain valve open and organic debris flushed from central channel.



Measuring, Monitoring, Managing

Measuring, monitoring, and managing water quality in dairy water troughs can be critical for herd health, productivity, and milk quality. It ensures nutrient balance, detects contaminants, and manages levels to prevent health issues and optimize milk yield. Good water quality practices enhance operational efficiency, animal wellness, and milk production.

Key Elements Measured and Monitored

- Water volume
- Water quality
 - ORP (Oxidation Reduction Potential)
- Water temperature



The Many Advantages

1. Enhanced Animal Health

- Disease Prevention
- Improved Hydration and Welfare



2. Increased Productivity and Performance

- Higher Milk Yield
- Improved Feed Efficiency



3. Cost Savings

- Reduced Veterinary Costs
- Maintenance and Operational Efficiency



4. Sustainability and Environmental Protection

- Sustainable Water Management
- Reduced Environmental Impact



5. Quality Assurance / Market Compliance

- Compliance with Standards
- Improved Product Quality



6. Data-Driven Decision Making

- Real-Time Monitoring
- Informed Management Decisions

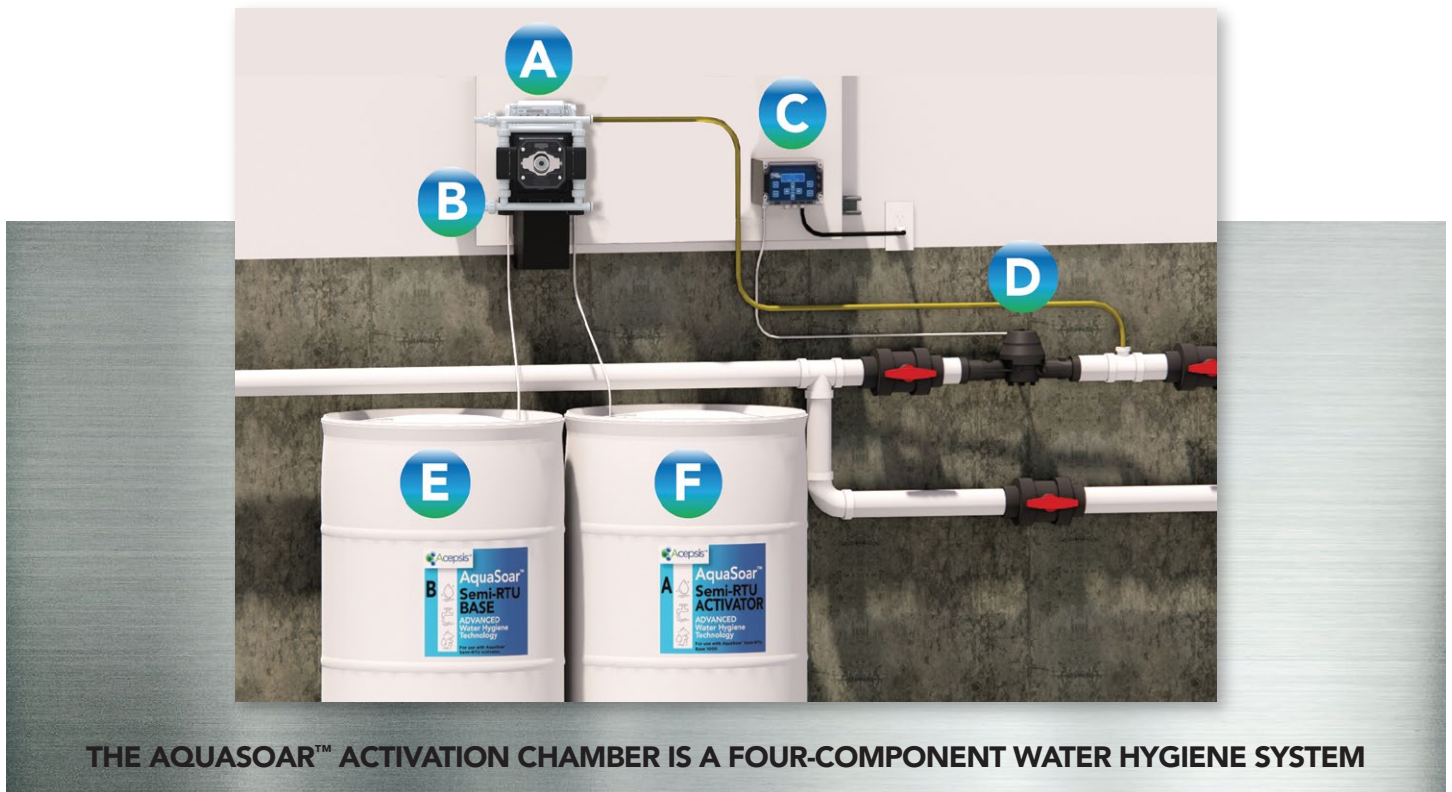


✓ Clean Troughs! ✓ Healthy Water! ✓ Healthier Herd!

A Key Component to an Optimal Hygiene System: Acepsis - AquaSoar™

HIGHER YIELDS AND EFFICIENCY

AquaSoar™ is a concentrated, two component, activator / base technology that produces chlorine dioxide on site, using the farm water source for dilution. The specially formulated AquaSoar Activator / Base precursors produce chlorine dioxide at the highest yield, in the shortest amount of time. The Acepsis® AquaSoar Activation System delivers the highest yields and efficiency in the activation and dosing of the AquaSoar product. Higher yields, higher efficiency, quantifiable results, increased ROI.



THE AQUASOAR™ ACTIVATION CHAMBER IS A FOUR-COMPONENT WATER HYGIENE SYSTEM

- A. AquaSoar™ Activation Chamber
- B. Chemical Pumps (2 pumps)
- C. Controller
- D. Water Meter
- E. AquaSoar™ Base Condensed Product
- F. AquaSoar™ Activator Condensed Product

BIOFILM REMOVAL AquaSoar™ enhances primary water hygiene effectiveness by penetrating and breaking down the structural components of biofilm, removing deposits that facilitate the growth and protection of dangerous pathogens. In other words, AquaSoar breaks up the “organic glue” that holds biofilm together, binding them to the surfaces within water systems. Adding AquaSoar to the water system provides the ultimate “one-two punch”:

AquaSoar destroys the biofilm structure and eliminates the bacterial presence within the water system.

SMART TROUGH™

Water Trough Score Card

An easy-to-follow guide to compare your water troughs against the following Score Rates.



	Water Valve Entry Area	Trough Water	Organics on Bottom	Biofilm	ORP (mV)	ATP (RLU) (AquaSnap)
Score 1	Clean / Clear	Clean / Clear	Minimal	None on sides or bottom	>600	<50
Score 2	Clean / Clear	Slight Haze	Some	None on sides or bottom	>500	<100
Score 3	Hazy	Hazy	Covers the Base	Slight on sides or bottom	>400	<250
Score 4	Cloudy	Cloudy	Buildups	High Level on sides or bottom	>300	<1000
Score 5	Opaque	Opaque	High Level of Buildups	On Sidewalls and bottom	<300	>1000

SCORE 1



SCORE 5



For more information, call Acepsis® or your local representative.



ACEPSIS®, LLC is an animal health based company that is focused on the development of state-of-the-art animal hygiene technologies. Our Company's mission is to apply innovative animal hygiene technologies into the agricultural and veterinary market sectors.